



SUSTAINABLE HARVEST INTERNATIONAL

2015 ANNUAL REPORT

(JULY 1, 2014 - JUNE 30, 2015)

Dear Friends,

We are an organization made up of individuals--from the individual farmers and families who partner with us in Central America, to the dedicated staff members who sweat alongside them in the fields, to our staff here in the United States, and to each one of you.

This year, we're grateful to each of you for helping us be the best organization we can be. You've shown us the power that each one of us has, and it's because of you that we've been so successful.

Though we depend on individuals, it's the collective spirit that binds us all together and makes positive change possible.

THANK YOU!

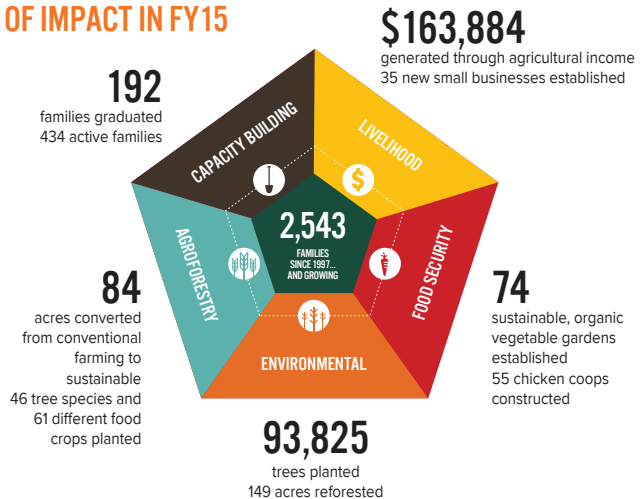
Renée Johnson
Executive Director

Florence Reed
President + Founder



WE PRESERVE THE ENVIRONMENT BY PARTNERING WITH FAMILIES TO IMPROVE WELL-BEING THROUGH SUSTAINABLE FARMING.

OUR FIVE AREAS OF IMPACT IN FY15



FY15 CONTRIBUTIONS + IN-KIND

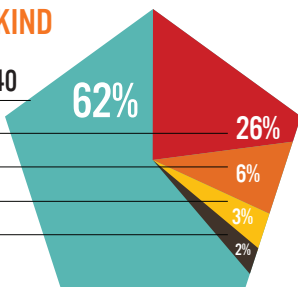
INDIVIDUALS \$1,038,540

FOUNDATIONS \$434,563

TRIPS \$106,256

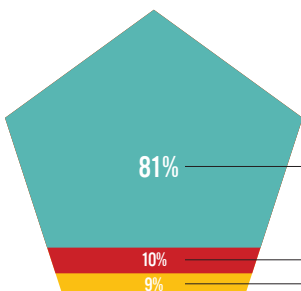
PARTNERS \$54,869

IN-KIND \$35,943



\$1,670,171

FY15 EXPENSES



\$1,667,619

PROGRAM \$1,357,119

FUNDRAISING \$161,289

MANAGEMENT + GENERAL \$149,211

THE BOTTOM LINE? EVERYTHING WE DO AS AN ORGANIZATION SEEKS TO STRENGTHEN AND IMPROVE OUR PROGRAMS IN CENTRAL AMERICA.

CONSOLIDATED INCOME & EXPENSES
FOR THE YEAR ENDED JUNE 30, 2015

SUPPORT + REVENUE

CONTRIBUTIONS \$ 1,634,228

IN-KIND \$ 35,943

OTHER INCOME \$ 21,853

TOTAL INCOME \$ 1,692,024

EXPENSES

PROGRAM \$ 1,357,119

FUNDRAISING \$ 161,289

MANAGEMENT + GENERAL \$ 149,211

TOTAL EXPENSES \$ 1,667,619

REVENUE IN EXCESS OF EXPENSES \$ 24,405

NET ASSETS BEGINNING OF YEAR \$ 605,329

NET ASSETS END OF YEAR \$ 629,734

THANK YOU

WHAT'S NEXT FOR SUSTAINABLE HARVEST INTERNATIONAL?

We're glad you asked! We are...

- piloting an internship program with EARTH University to measure results in each area of impact
- publishing two research studies highlighting the impact of our work
- investing in vehicles for our program staff to ensure they spend as much time as they need with program participants and to ensure their safety
- developing a model for working with families after they graduate from our program

TO SEE OUR COMPLETE FY15 ANNUAL REPORT, PLEASE VISIT OUR WEBSITE

WWW.SUSTAINABLEHARVEST.ORG

HELLO@SUSTAINABLEHARVEST.ORG | 207-669-8254