



# ANNUAL REPORT

## FY2019

JULY 1, 2018-JUNE 30, 2019



# A NOTE FROM OUR EXECUTIVE DIRECTOR

Dear friends,


This past year marked another significant step in SHI's journey and so much of what we accomplish as an organization would not be possible without your support. I am extremely grateful for our network of donors, volunteers, advisors, and staff: all who possess an unwavering commitment to preserving the environment and improving the lives of smallholder farming families. Whether you have been with us since the beginning of our 22 year history or you are joining us this past year for the first time - I am so glad to count on your support. We absolutely could not do this important work without all of you!

Our SHI Programs in Belize, Honduras, and Panama continue to solidify their presence as leaders in the fields of regenerative agriculture and environmental conservation. By widening their networks and leveraging partnerships throughout the region, our programming is able to create an even deeper and more transformative impact in the lives of the participant families and the natural environment.

This past year, 116 partnering families graduated from our five-phase, five year program - a significant achievement for everyone involved. Each SHI graduation I attend, I watch family members proudly receive their SHI diploma and am filled with joy and hope for the future of our shared planet. These families now form part of an incredibly important group of land stewards, eager to continue to positively influence the environment and their family for generations to come.

On the horizon, our efforts to scale SHI's impacts to more and more smallholder farming families is full of potential. We are excited to take our many successes and lessons learned from this past year and apply them to our ambitious goals set before us. I am excited about all the possibilities in the year head and I am so glad to have you by our side.

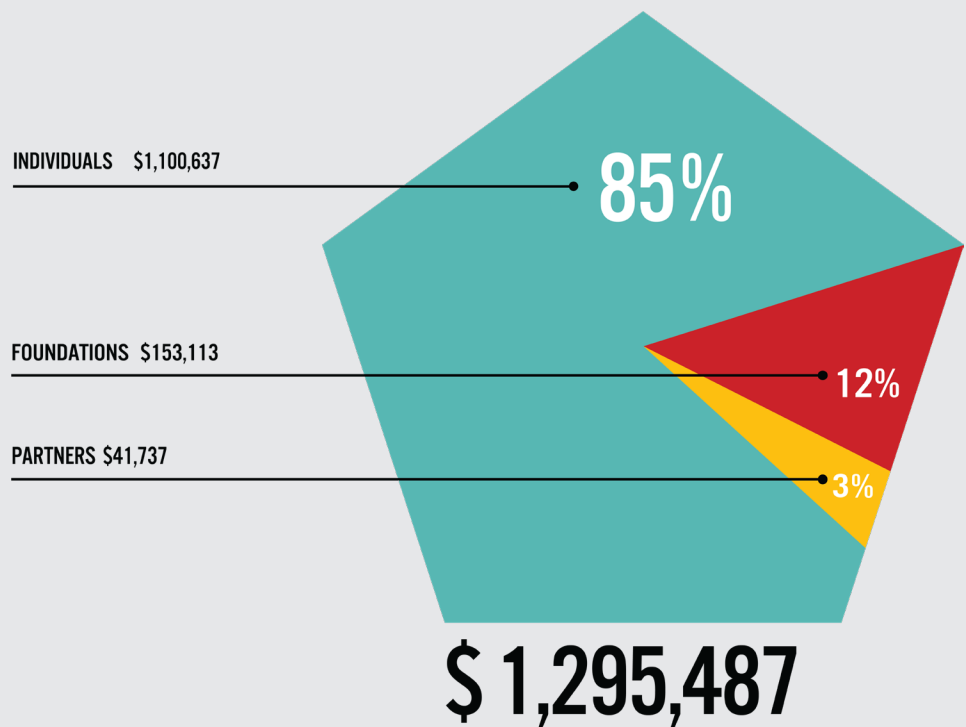
With gratitude,



Elliott Powell  
Executive Director

# CONTRIBUTIONS

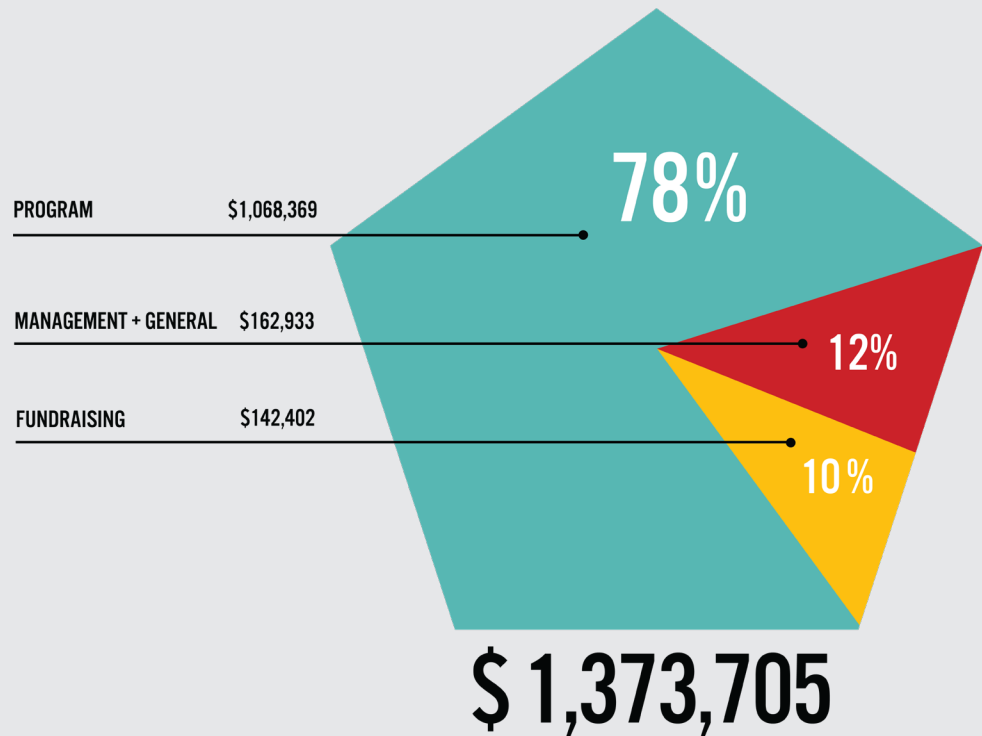
In FY2019, SHI received nearly 1.3 million in revenue. The majority of this came from individual donors.



Donations, both small and large, from individuals make up **85% of our entire budget**. We are so grateful to all the donors who have chosen to stand by our side. We absolutely couldn't do this work without you!

# EXPENSES

SHI's program expenditures made up 78% of all expenses. Full audited financials are available at [www.sustainableharvest.org](http://www.sustainableharvest.org).



Supporting smallholder farmers is the reason we exist. In everything we do, we constantly strive to have our values and our mission clearly reflected in our budget.

A photograph of an older man and a younger man standing in front of a chicken coop. The older man, Hernando Santoya, is on the right, wearing a dark blue t-shirt, with his right arm around the shoulder of the younger man. The younger man is on the left, wearing a red t-shirt. They are both looking directly at the camera. The background shows a wire-mesh enclosure filled with many chickens.

After having farmed his land conventionally for 37 years, Hernando Santoya decided to try something new - something that would be better for his family and the planet.

“

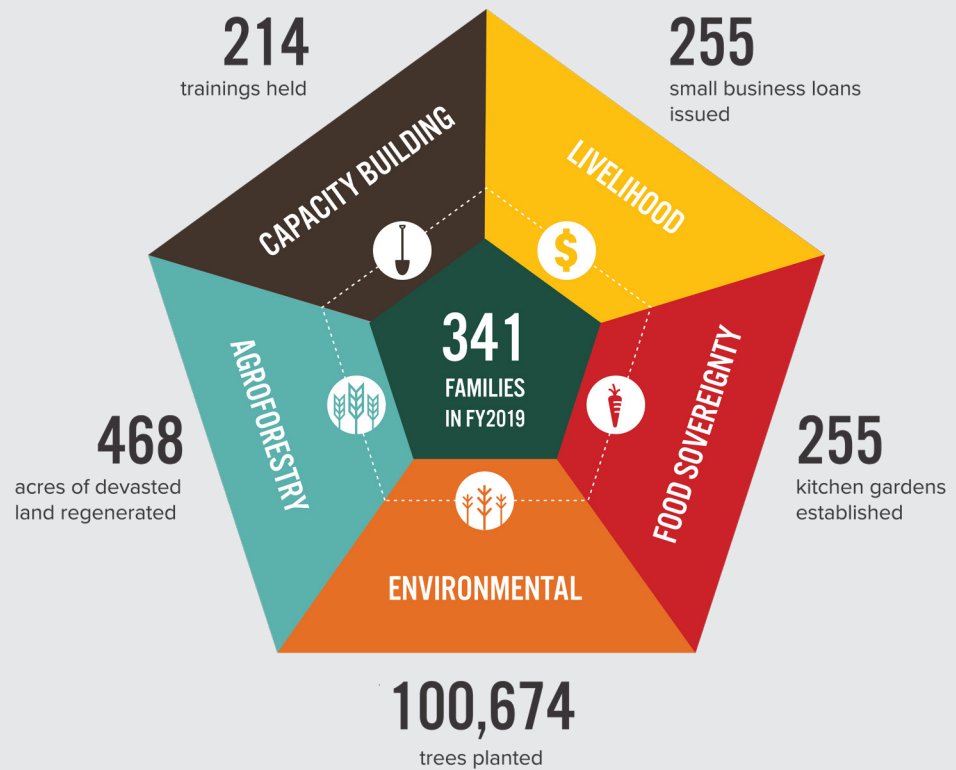
One or two people can't change the whole planet. Everyone has to do their part, for the generations that follow them.”

- Hernando Santoya  
Chunox, Belize

[Read more](#) about his experience partnering with SHI.

# IMPACT

SHI expanded its reach across its five program areas.



Over the course of 22 years, Sustainable Harvest International has partnered with **2,975 farming families** to improve their health and well-being. Partnering farmers, through their dedication and community leadership, will continue to **multiply the impact of our work for generations to come.**

**A closer look  
at our FY19 work  
in the impact area of **food sov-er-eign-ty****  
*/fōōd/ /säv(ə)rən(t)ē/*



The right of peoples to healthy and culturally appropriate food produced through ecologically sound and sustainable methods, and their right to define their own food and agriculture systems.<sup>1</sup>

<sup>1</sup> Via Campesina

- 255** kitchen gardens
- 169** nurseries
- 115** compost pits
- 35** chicken coops
- 10** fish ponds
- 15** silos
- 3** pig pens

These FY19 food sovereignty projects helped farmers retake control over how they produce and consume food

# WHATS NEXT FOR SHI? SCALE.

To meet the challenge of climate change, SHI is setting ambitious goals and designing an actionable plan for scale.

The challenge we face is enormous

Most of the world's 500 million smallholder farms degrade the land and soil through slash-and-burn farming or the use of agrochemicals, decreasing biodiversity and contributing significantly to climate change, while suffering from malnutrition and undermining their long-term ability to grow crops.

If we are going to limit global warming to 1.5-2 degrees Celsius, as set forth in the Paris Climate Agreement, we need to take unprecedented steps to transform our agricultural sector.

But we have a vision

We have set a goal to help **one million farms** transition to regenerative organic agriculture practices, reversing degradation on **8 million acres of land** and achieving **food security for 5 million people**, including **3 million children**, by 2030 in line with the United Nations' Sustainable Development Goals.

In FY2019, SHI's Board of Directors approved a vision for scale, formed a task force of SHI board members and staff, and finished a scalability assessment. Stay tuned!





Sustainable Harvest  
INTERNATIONAL



Mailing Address: 177 Huntington Ave Ste 1703 #23701  
Boston, MA 02115

Phone: (207) 669-8254

Email: [hello@sustainableharvest.org](mailto:hello@sustainableharvest.org)

[www.sustainableharvest.org](http://www.sustainableharvest.org)