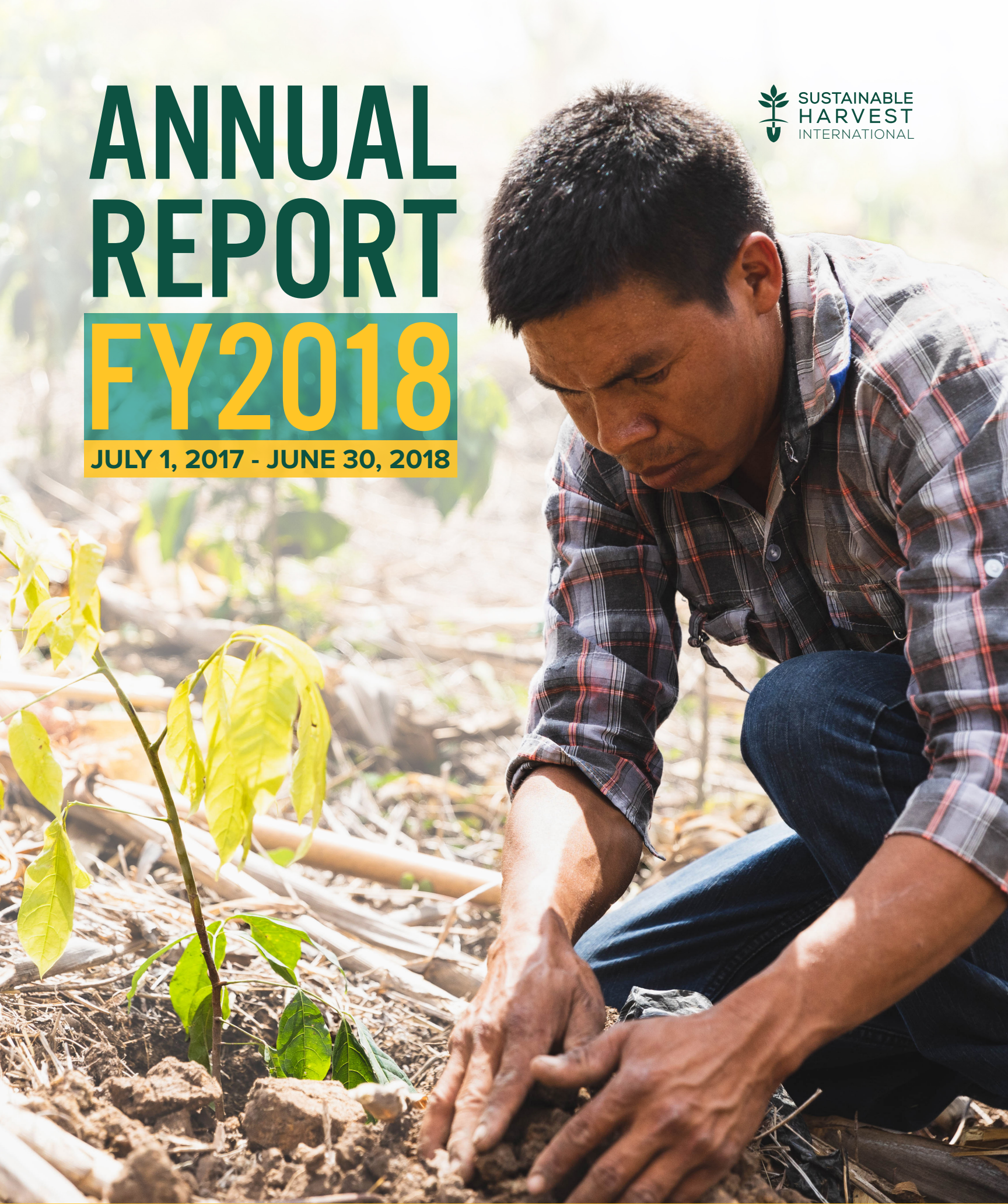




ANNUAL REPORT

FY2018

JULY 1, 2017 - JUNE 30, 2018



A NOTE FROM OUR FOUNDER

Dear friends,

It's impossible to fully express my gratitude for all the partnering families, field trainers, staff members, volunteers and donors who provided me with hope and inspiration for our future over the past year. Together, we're building ecosystems where family farmers and tropical forests thrive in harmony. It's the dedication of our SHI family that serves as a constant reminder that a better future is indeed possible.

Let me be clear - that future demands hard work. But, without a doubt, it's a future worth working towards.

That's why we committed ourselves to scaling up our organizational impact. In 2018, our Board of Directors approved an audacious goal to tackle the urgency of environmental collapse head on. By 2030, we aim to reverse the degradation of **8 million acres on a million farms**, thereby creating food security and economic opportunity for **5 million people**.

We are in this together and we are so grateful to have you by our side.

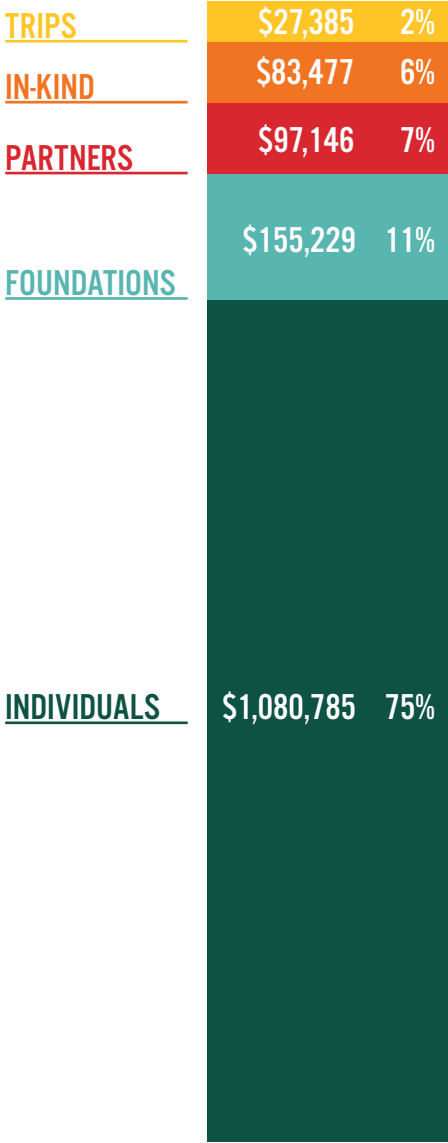
With gratitude,



Florence Reed
Founder + Director of Strategic Growth

CONTRIBUTIONS

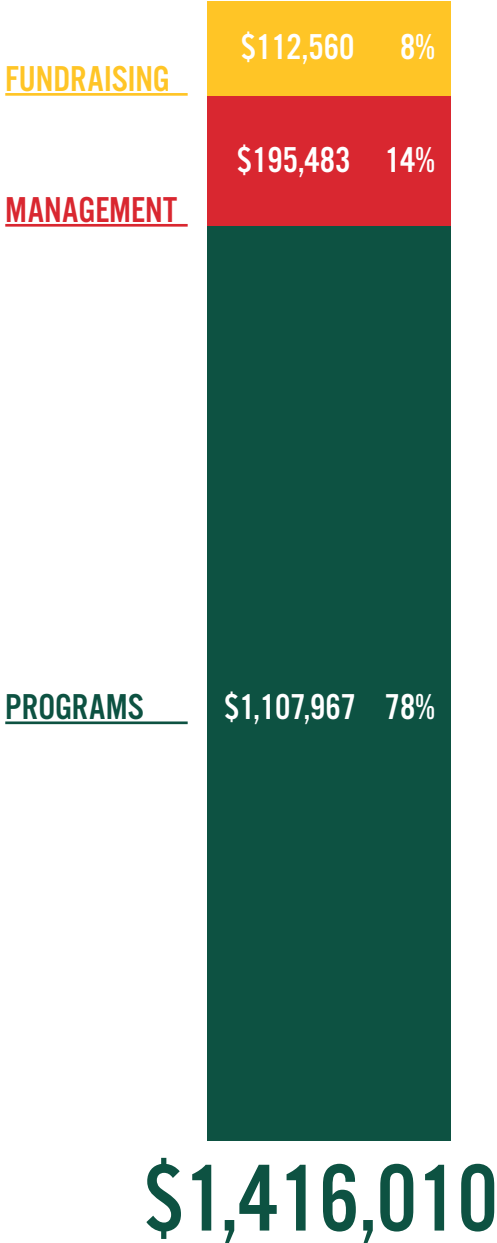
In FY2018, SHI received \$1.4 million in revenue. The majority of this came from individual donors.



\$1,444,022

EXPENSES

SHI's program expenditures made up 78% of all expenses.
Full audited financials are available at sustainableharvest.org



IMPACT

In FY2018, SHI expanded its reach across all five program areas.

